

PRESCHOOL DROP-OFF

Line-up

Cars should travel north on 11th Avenue S. looking for designated "drop off" zones near door 2W. Please wait until directed by a staff member to exit your vehicle. (Walkers should proceed to same door, waiting on sidewalk for faculty escort.)

Buddy-up

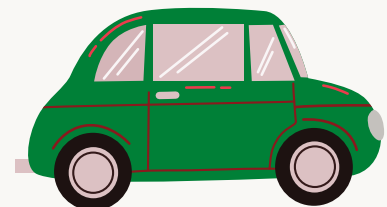
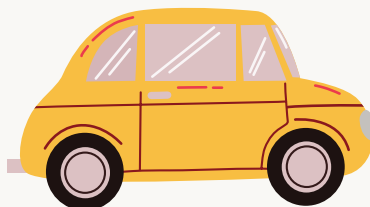
A member of the Preschool staff will escort your student from your vehicle into the school. Parents should remain with vehicle at all times. (Parents of walkers should say good-byes at sidewalk.)

Move-up

If your child requires extra help saying good-bye, designated short-term parking is available further up 11th Ave.

Early Morning Drop-off

Parents should escort student to door 1W and ring the doorbell within door 1W. Parent will be buzzed in and bring child to Rm 105.



PRESCHOOL Pick-Up

11:15am Dismissal (all)

Cars & walkers should follow same procedure used for morning drop-off, loading passengers in the same designated spots along 11th Ave. near door 2W. (Please display family nameplate on dashboard.)

3:00pm Dismissal (cars)

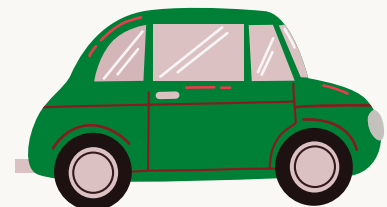
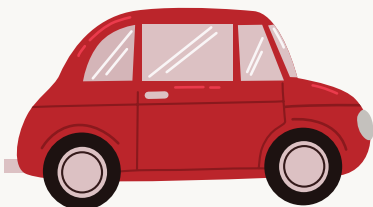
Cars & walkers should follow same procedure used for morning drop-off, loading passengers in the same designated spots along 11th Ave. near door 2W. (Please display family nameplate on dashboard.)

3:00pm Dismissal (walkers)

Walkers should wait along sidewalk on 55th St. (between 11th & 12th Avenues). Students will be dismissed out of door 7E at approximately 3:07pm and escorted to sidewalk by faculty.

Extended Day Dismissal (all)

Parents should come to door 1W and ring the doorbell within door 1W. Parent will be buzzed in and can pick their child up in Rm 105.



PRESCHOOL Drop-Off

