

# FOR K-8 DROP-OFF & PICK-UP @OLP IT'S: **CARLINE, CARLINE, CARLINE!**

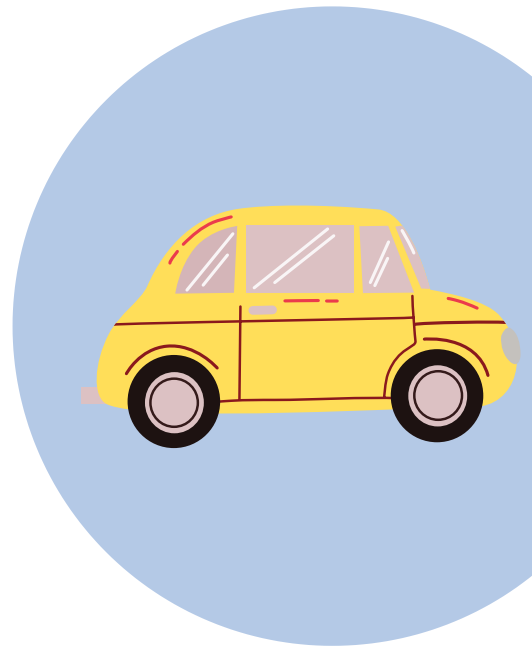


## **STOP: WAIT YOUR TURN**

Enter OLP parking lot at north entrance off of 12th Avenue S. and proceed through the lower lot, stopping where indicated by signs. Remain in car until called forward by a member of OLP staff.

## **DROP: LET STUDENT OUT**

Move forward to dedicated drop-off spots when signaled by a staff member. Only student should disembark from vehicle, once mask is secured, and proceed to appropriate door, as assigned by grade (K-5 use door 7E; 6-8 use door 3N).



## **ROLL: DRIVE AWAY**

Once student has safely left the vehicle, cars should proceed out of the parking lot through the south exit, making room for the next car in line.

## **REPEAT: SAME STEPS AT PICK-UP**

Your student will be dismissed out of the same door that they enter. Please be sure to display your family name card on the passenger side of your dashboard and your student will be called via radio.



### **WALKERS/BIKERS**

Walkers & Bikers should access campus via the driveway near the picnic tables (on 55th St. between 11th & 12th Avenues) then proceed to appropriate door as assigned by class. These students will be dismissed out of door 7E at 3:07pm.

### **EXTENDED DAY**

Early morning drop-off, please escort student to door 2W (on 11th Ave. S.) and call 952-353-7899 for faculty escort. Afternoon pick-up, come to door 7E (55th St.) and call same number as above for student to be dismissed.

# K-8 Drop-Off and Pick-Up and ELP 3:00 pm Pick-Up

11th Avenue

