

# ELP Drop-off

## Line-up

Cars should travel north on 11th Avenue S. looking for designated "drop off" zones near door 2W. Please wait until directed by a staff member to exit your vehicle. (Walkers should proceed to same door, waiting on sidewalk for faculty escort.)

## Mask-up

Before you exit the vehicle, please make sure masks have been secured, and all personal belongings have been gathered.

## Buddy-up

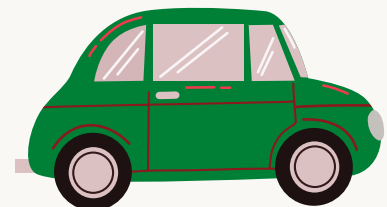
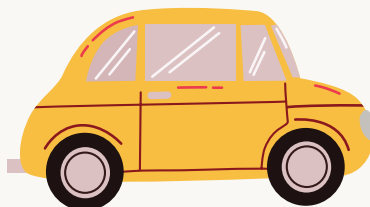
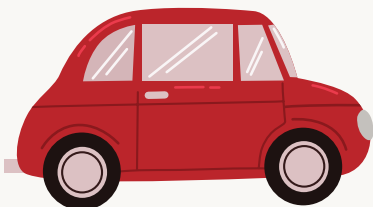
A member of the ELP staff will escort your student from your vehicle into the school. Parents should remain with vehicle at all times. (Parents of walkers should say good-byes at sidewalk.)

## Move-up

If your child requires extra help saying good-bye, designated short-term parking is available further up 11th Ave.

## Early Morning Drop-off

Parents should escort student to door 2W and call extended day mobile phone (952-353-7899). Student will be greeted at door by faculty.



# ELP Pick-up

## 11:15am Dismissal (all)

Cars & walkers should follow same procedure used for morning drop-off, loading passengers in the same designated spots along 11th Ave. near door 2W. (Please display family nameplate on dashboard.)

## 3:00pm Dismissal (cars)

Cars should enter the OLP parking lot at the north entrance (near corner of 12th Ave. & 54th St.) Follow signs to travel south through lower lot, pulling into designated loading zones as directed. (Please display family nameplate on dashboard.)

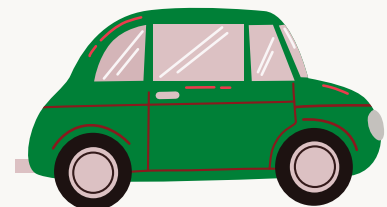
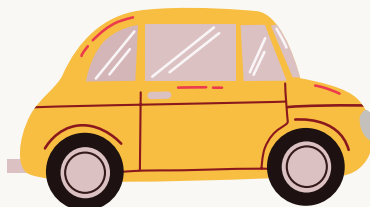
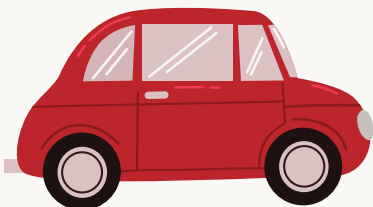
## 3:00pm Dismissal (walkers)

Walkers should wait along sidewalk on 55th St. (between 11th & 12th Avenues). Students will be dismissed out of door 7E at approximately 3:07pm and escorted to sidewalk by faculty.

## Extended Day Dismissal (all)

Parents should proceed to door 2W (near corner of 11th Ave. & 55th St.) and call extended day mobile phone (952-353-7899).

Student will be escorted to door by faculty.



# ELP Drop-Off and 11:15 am Pick-Up

